

A graciosa meta
do seu amigo
Op. No. 11. L. de Franjo.

Supersinha

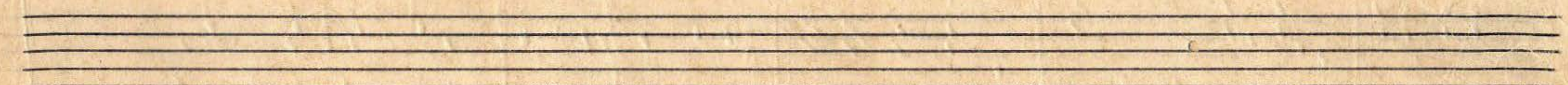
Polka-lundu!

E. Taramita

The first system of handwritten musical notation for 'Supersinha'. It consists of two staves. The upper staff is in treble clef with a key signature of one sharp (F#) and a 2/4 time signature. The lower staff is in bass clef with the same key signature and time signature. The music is written in blue ink and features a melody in the upper staff and a bass line in the lower staff. The melody begins with a quarter rest, followed by a series of eighth and quarter notes. The bass line consists of chords and single notes, often marked with '+' signs.

The second system of handwritten musical notation. It continues the melody and bass line from the first system. The notation is consistent, with blue ink on a five-line staff. The melody in the upper staff shows some chromatic movement, and the bass line continues with rhythmic accompaniment.

The third system of handwritten musical notation. It concludes the piece. The melody in the upper staff ends with a double bar line. The bass line also concludes with a double bar line. There are some additional markings, including a '1^a' marking and a blue flourish at the end of the system.



2^a

1^a + 2^a

50

la parte

Tim